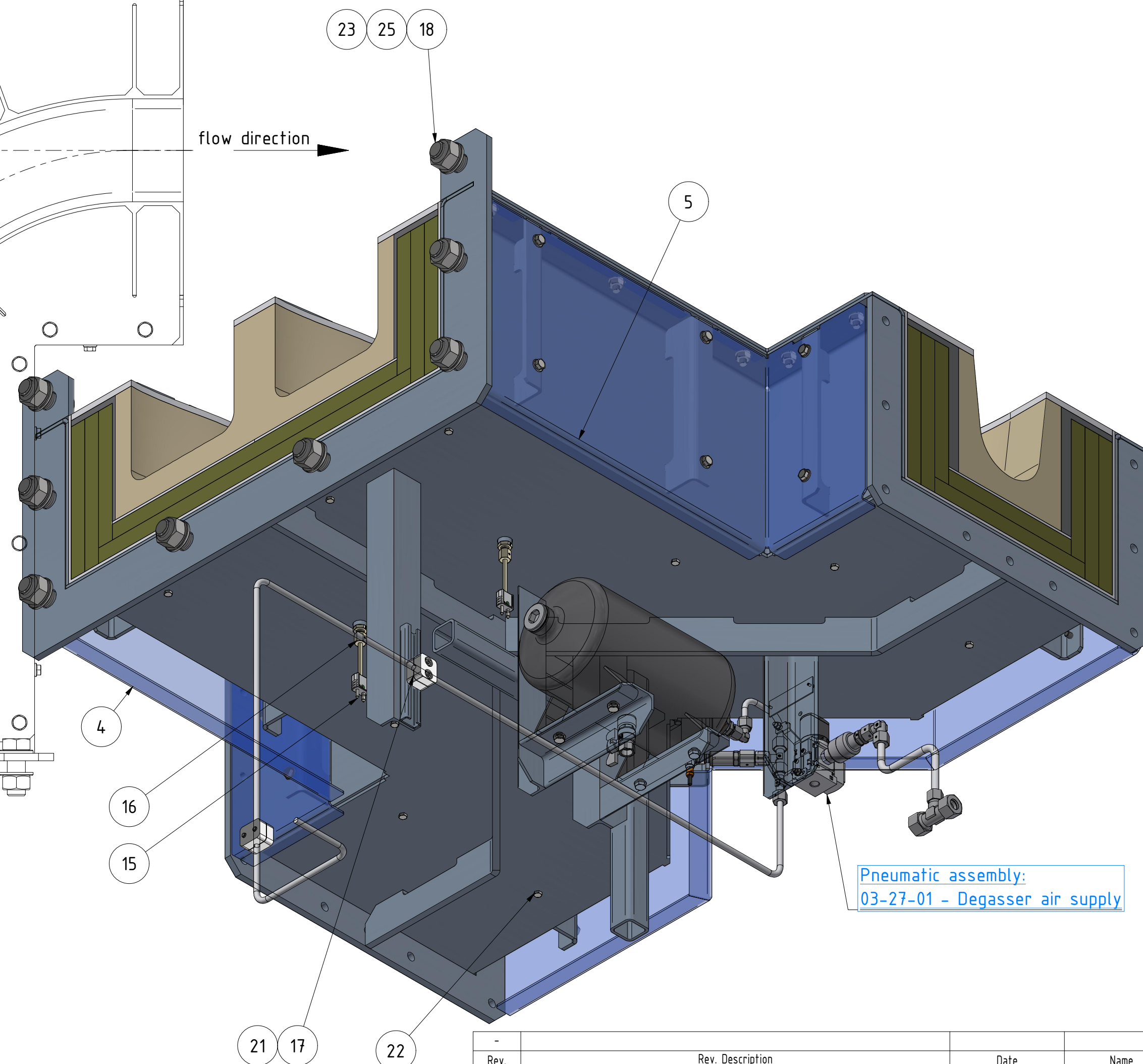




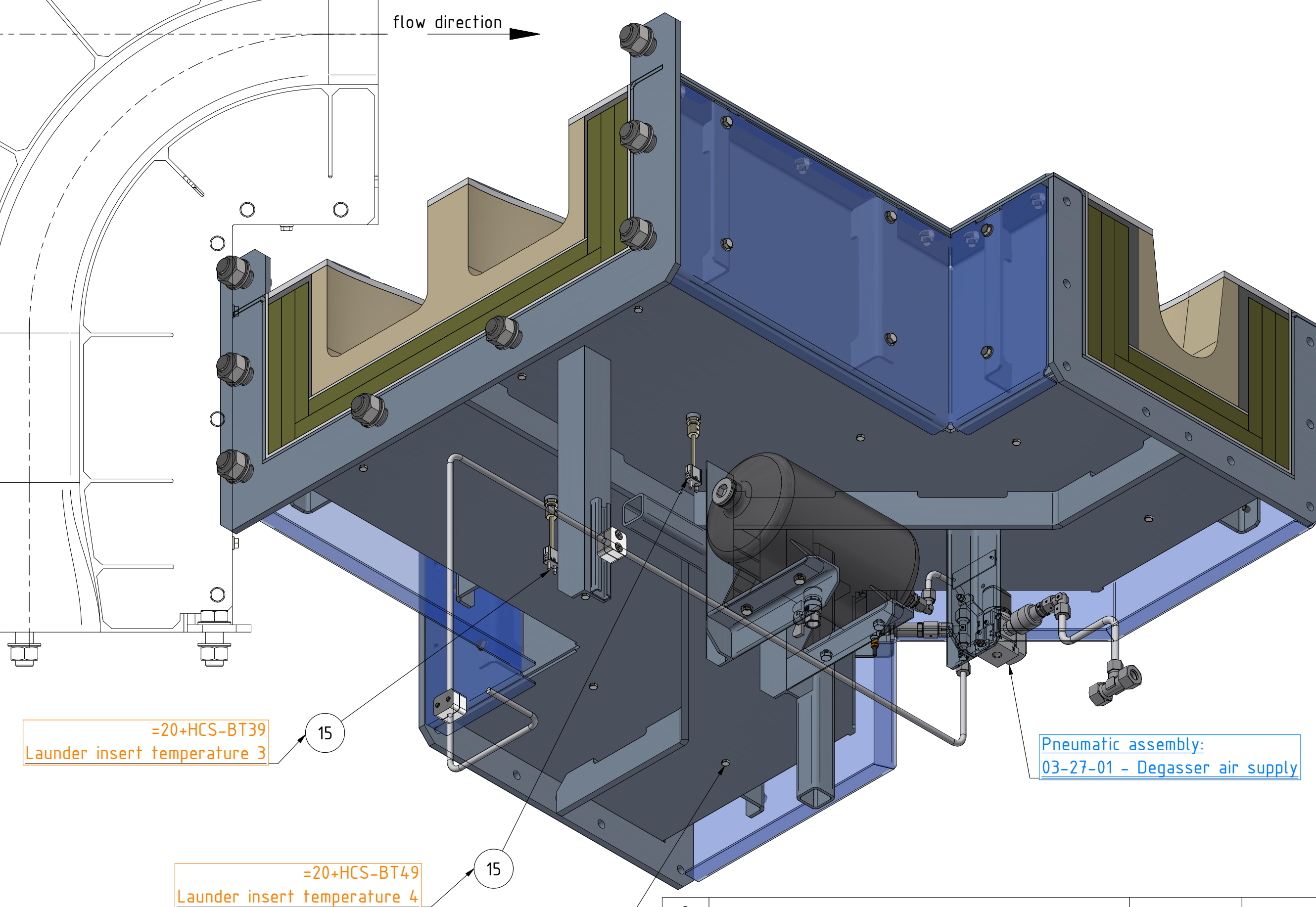
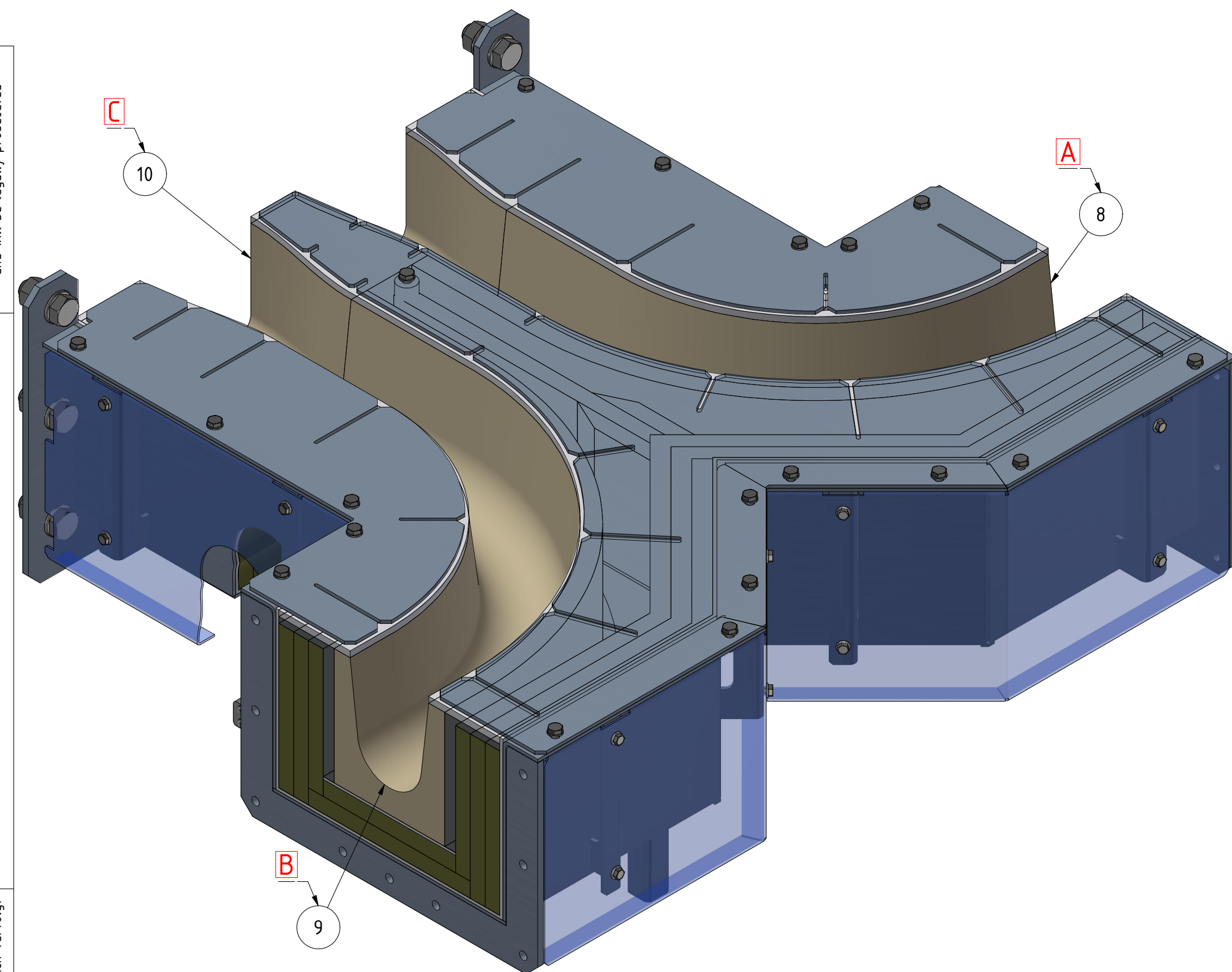
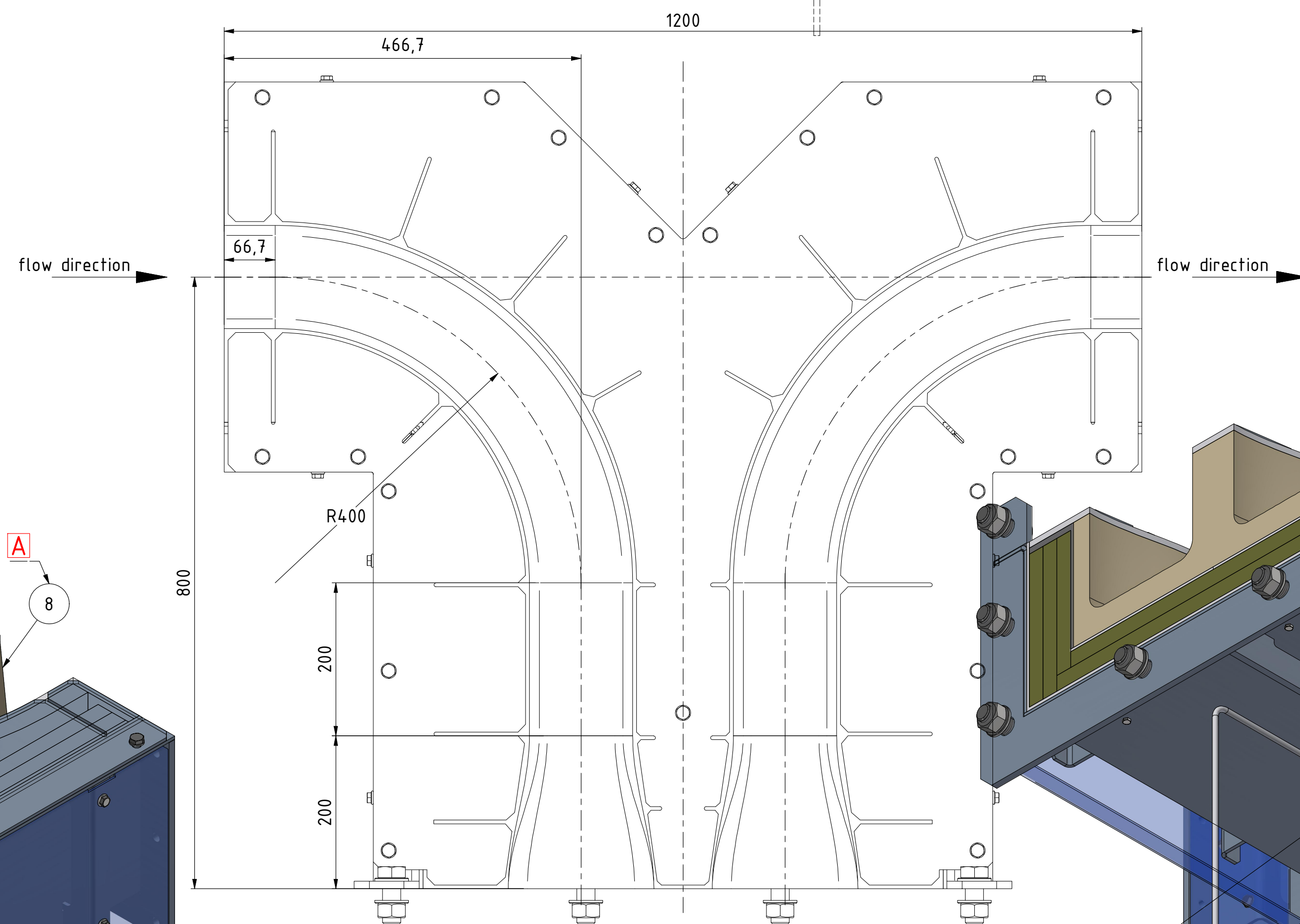
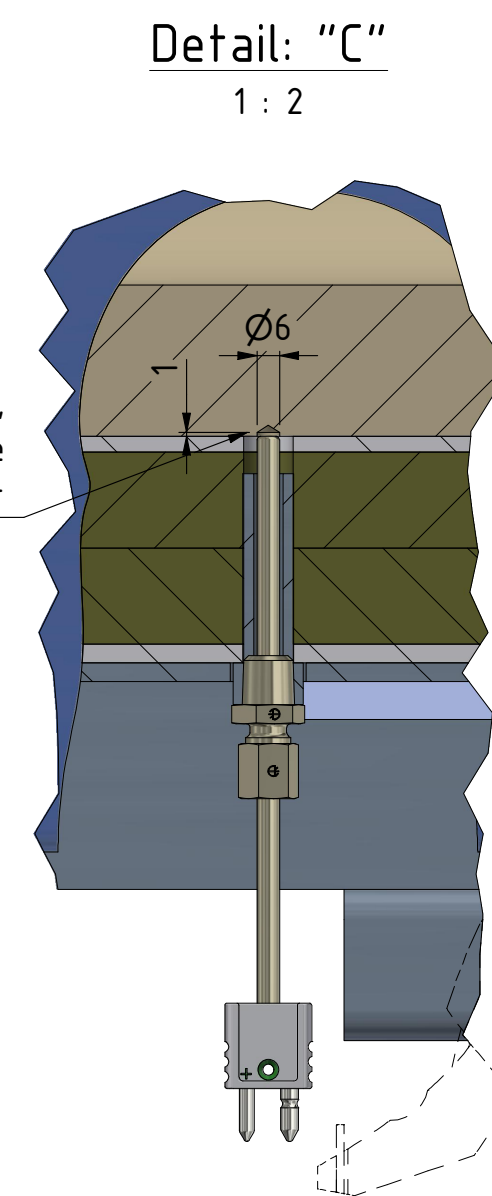
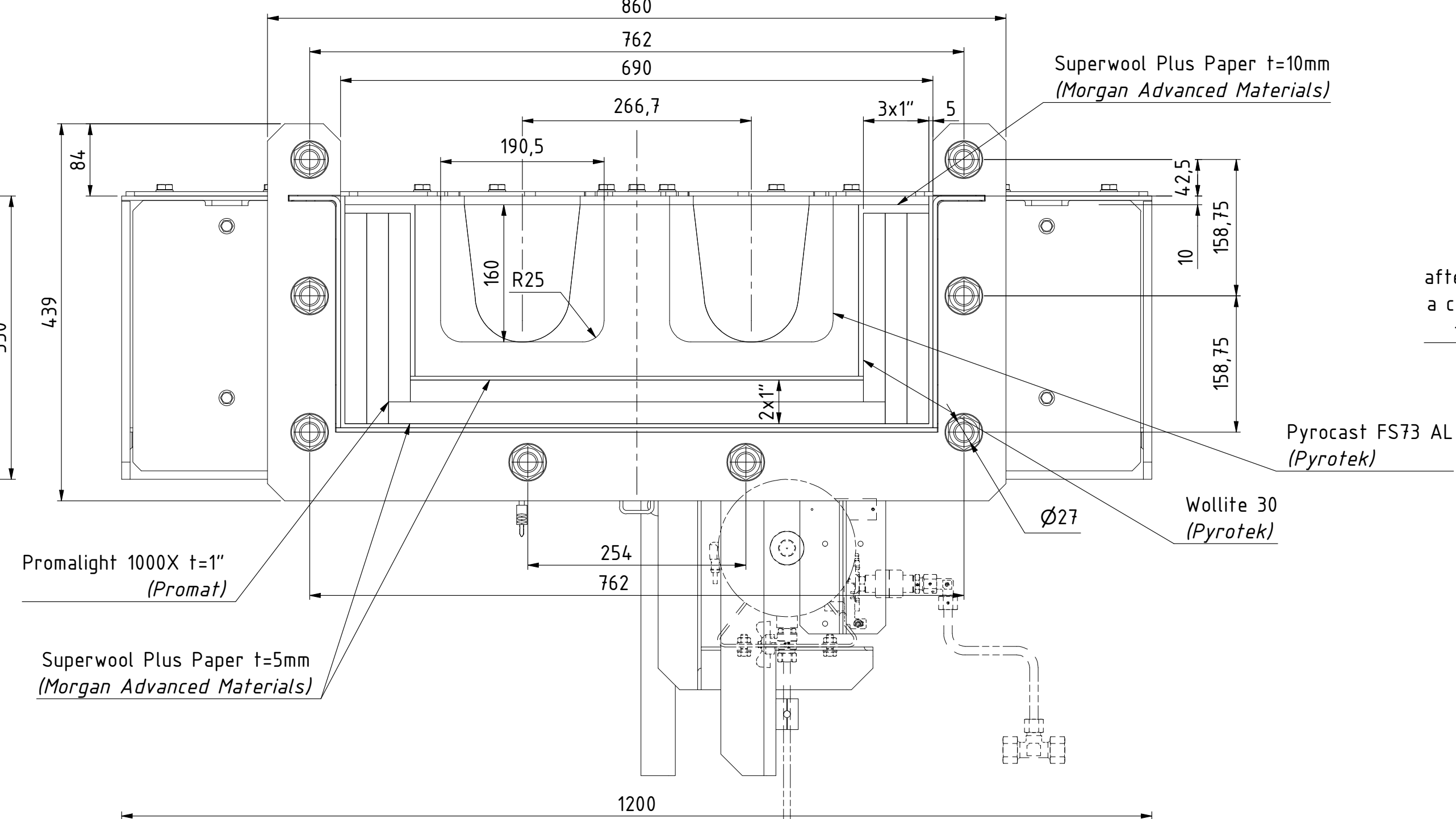
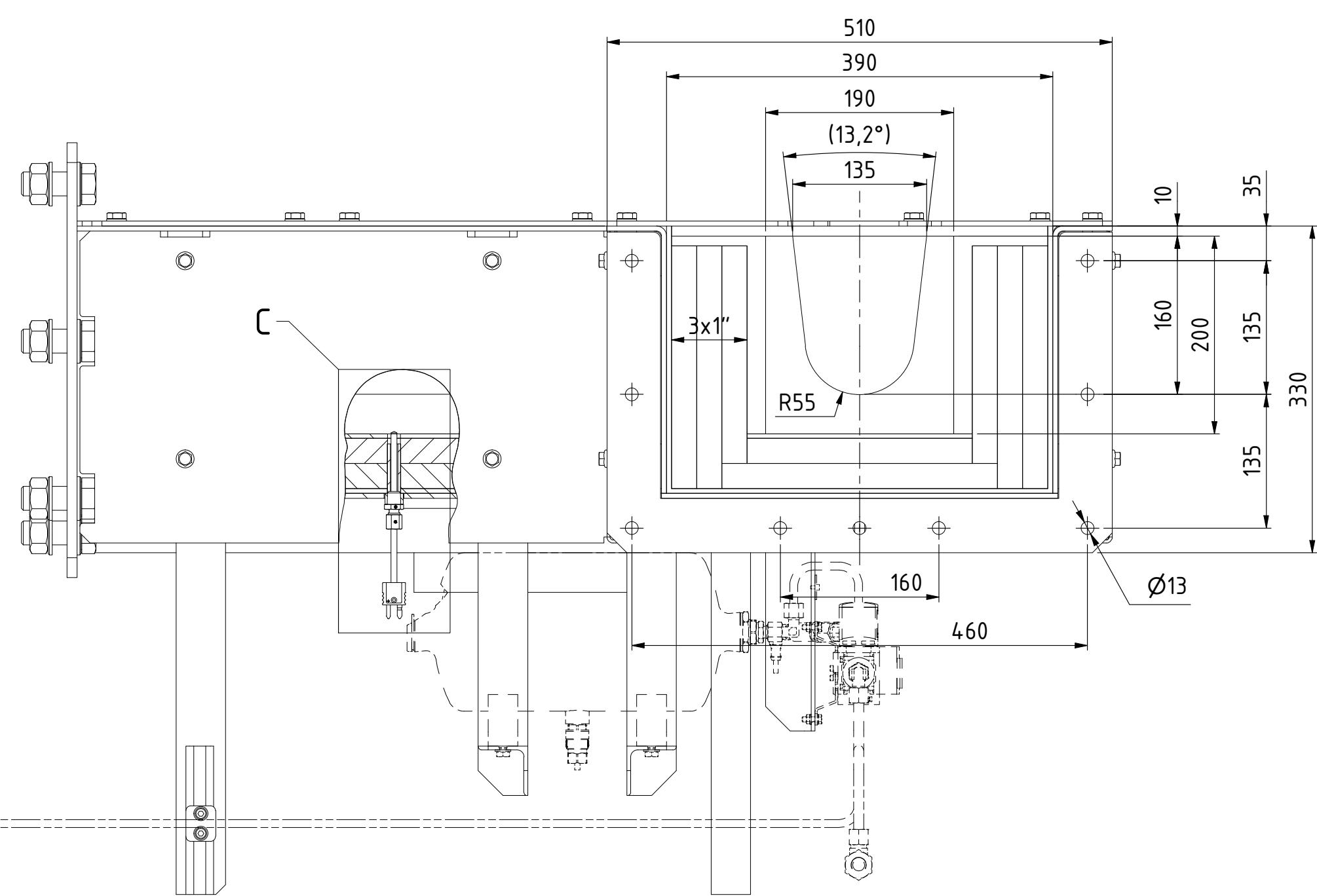
flow direction





Threads must be closed with screws, after completely bake-out of refractory.

rev		Rev				Date		Name	
Kunde / Projekt Customer / Project		390				Projektionsmethode 1 First angle projection method ISO 128		 <b>HPI</b> High Performance Industrietechnik GmbH 5292 Braunau-Ramhofen, Schloßstraße 32, Austria	
AL INVEST HDC 3000 27-02-Degasser IN-OUT launder									
Benennung Title		Launder piece Main assembly - Degasser IN-OUT 1200 x 1218 x 1334				Datum Date		Name Name	
						Erstellt Created		Vitzlum_F	
						Geprüft Checked			
						For Request			
						Werkstoff: Material:		Masse (kg) Mass (kg)	
								301,2 kg	
Zeichnungsnummer Drawing number		Revision		Format Size	Blatt Sheet	von off		Massestab Scale	
HPI-00108951		-		A1	1	2		15 (1:2)	





-									
Rev.	Projekt / Customer / Project	Beschreibung				Date		Name	
	390	 Projektionsmethode 1 First angle projection method ISO 128				 HPI High Performance Industrietechnik GmbH 5282 Braunau-Ranshofen, Schloßstraße 32, Austria			
AL INVEST HDC 3000 27-02-Degasser IN-OUT launder									
Benennung Titel						Datum Date		Name Name	
Launder piece Main assembly - Degasser IN-OUT 1200 x 1218 x 1334						23.06.2025 Erstellt / Created Geprüft / Checked		Vitzlum_ F	
								For Request	
Zeichnungsnummer Drawing number		Revision		Format Size	Blatt Sheet	von off	Werkstoff: Material		Masse (kg) Mass (kg) 301,2 kg
HPI-00108951		-		A1	2	2			Massstab: Scale 1:5 (1:2)

The unauthorized resp. other use than agreed of this document is not allowed and will be legally prosecuted

(c) Copyright by HPI GmbH

Die unbefugte bzw. bestimmungswidrige Verwendung dieser Unterlage ist nicht gestattet und wird gerichtlich verfolgt